



Project Profile

Rye Playland Ice Rink

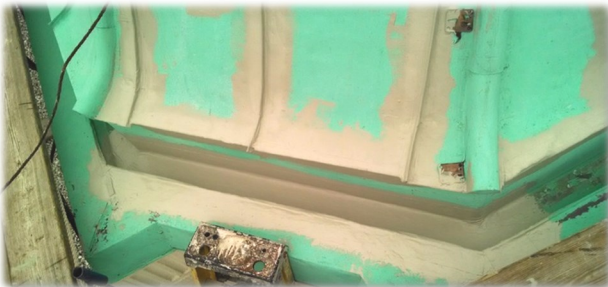


Project Specifications:

- ◆ Rye Playland Ice Rink
Rye, New York
- ◆ Standing Seam Metal

About the project:

This historic roof at the Rye Playland was renewed by using the Acrylabs PR-20 System. Fabric Reinforcement was used to address all seams and penetrations to create a seamless and watertight membrane. This roof required a specific color that Acrylabs was able to formulate and match.



The lightning diverter system was temporarily removed, the roofs were properly repaired, then the Acrylabs System installed



To get the desired finished look, spray techniques were utilized

