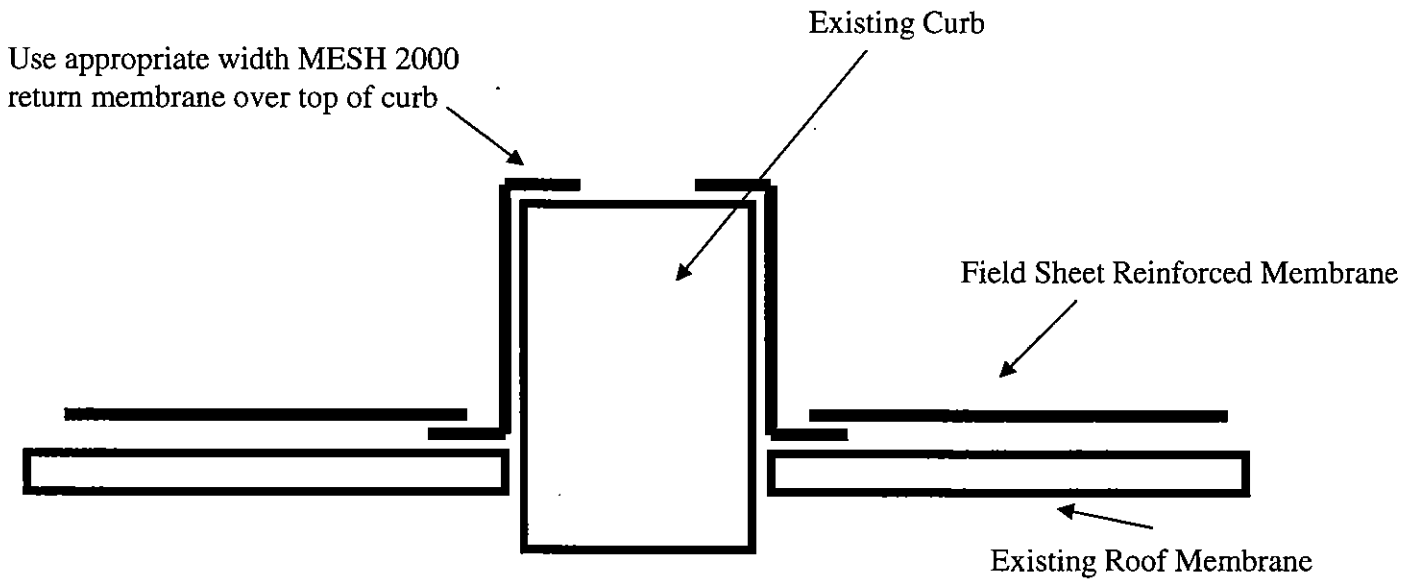




Acrylabs, Inc. Roof Detail

Curb Detail



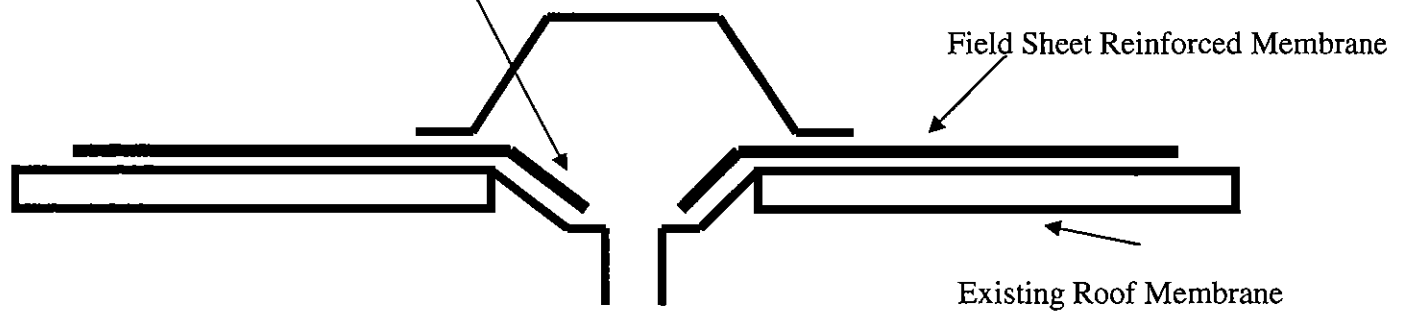
*** Overlap for field sheet is a minimum of 3" inches**



Acrylabs, Inc. Roof Detail

Drain Detail

Extend Reinforced Membrane into Drain Sump



*** Reinstall Clamping & Strainer Assembly Over Cured Membrane**

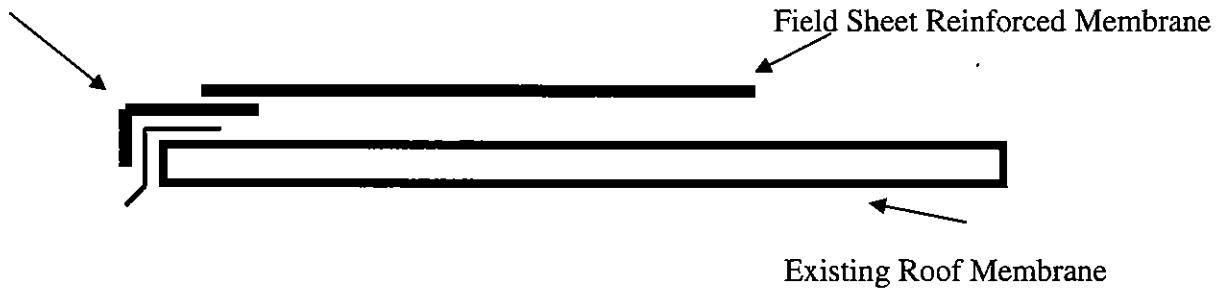


ACRYLIC COATINGS

Acrylabs, Inc. Roof Detail

Drip Edge

Use appropriate width MESH 2000
Turn down face of drip edge



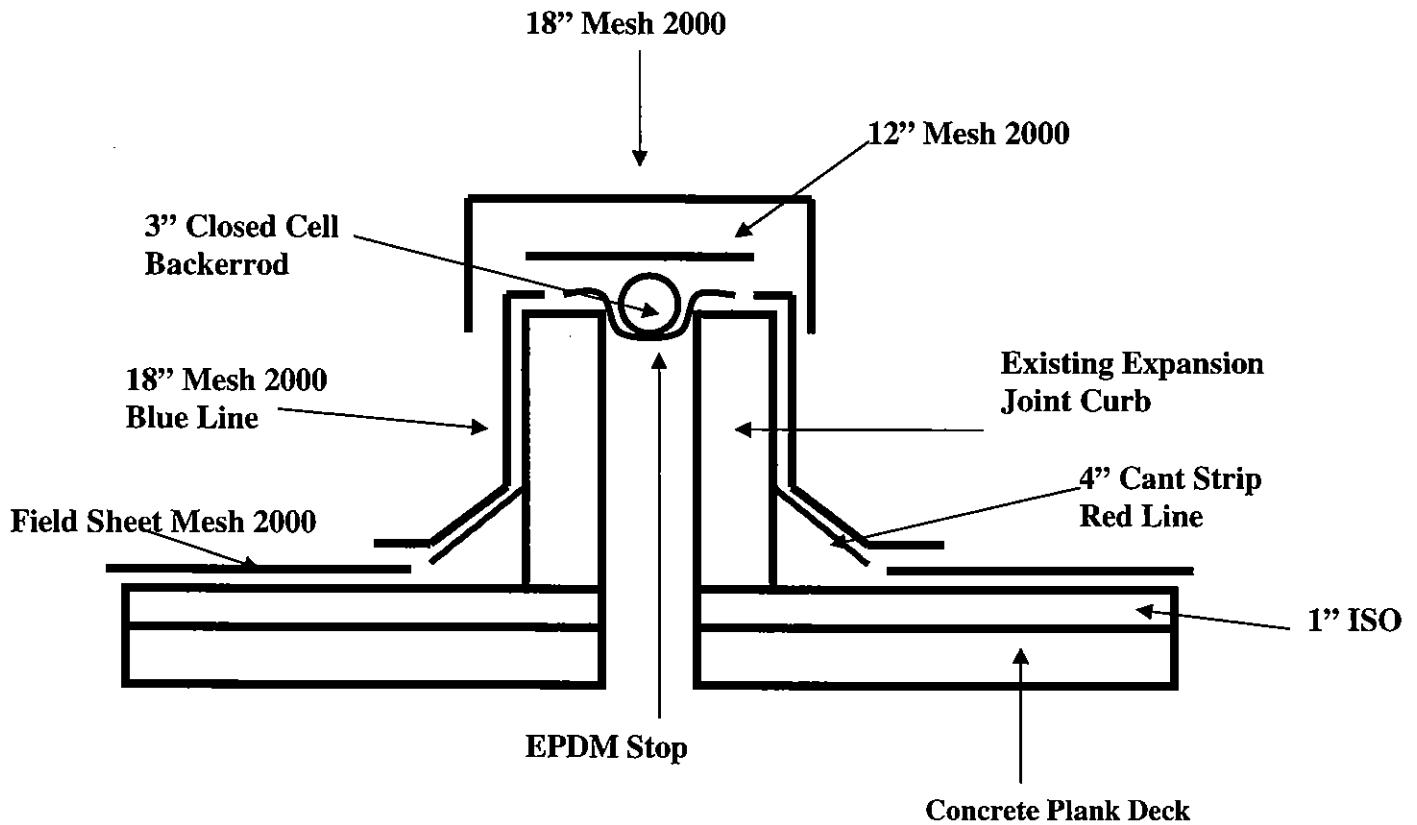
*** Overlap for field sheet is a minimum of 3" inches**



ACRYLIC COATINGS

Acrylabs, Inc. Roof Detail

Expansion Joint Detail



* Overlap for Mesh 2000 is a minimum of 3" inches

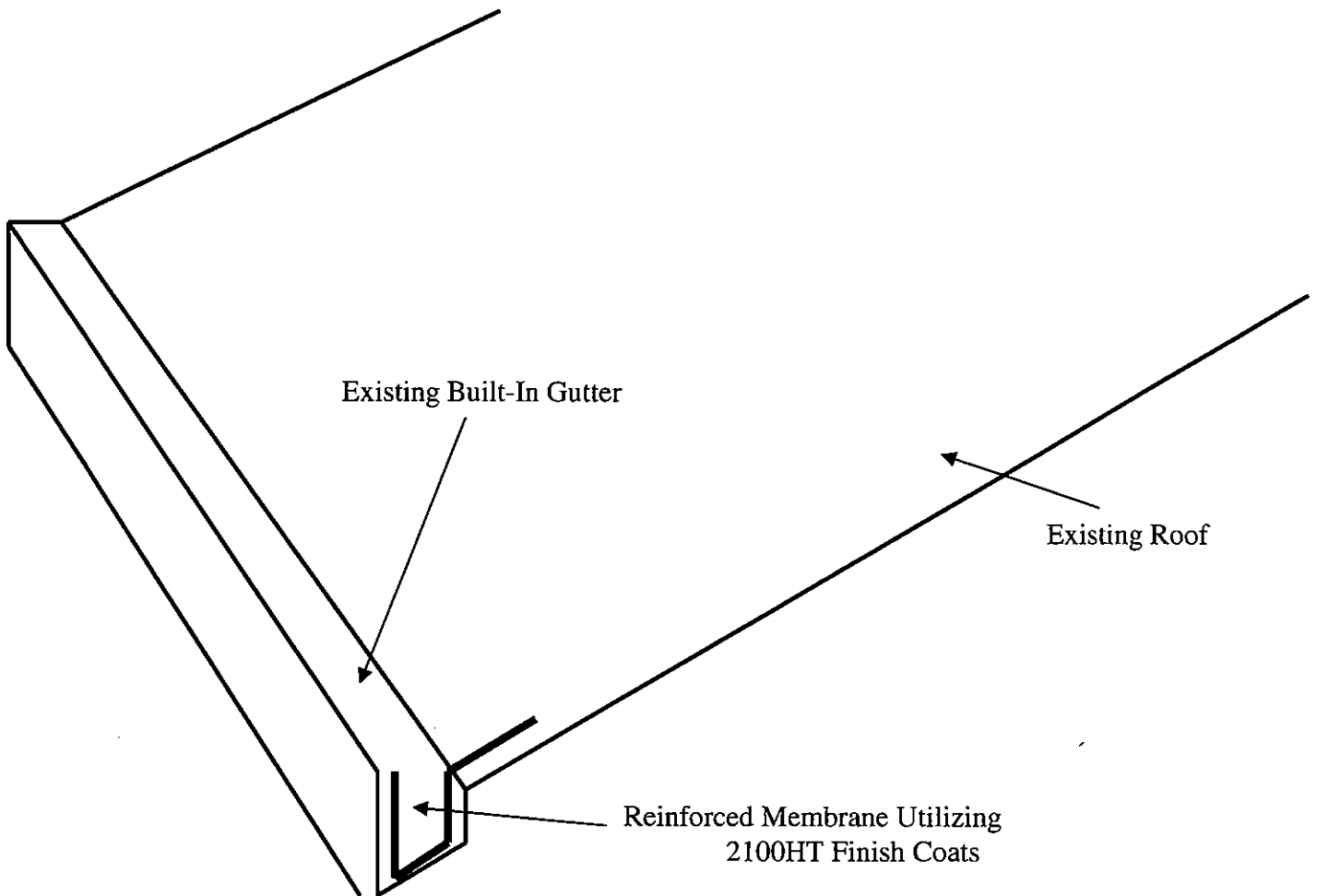
730 Commercial Lane Honey Brook, PA 19344
Toll Free (866)-273-1355 Fax (610) 273-1357
www.acrylabs.com



ACRYLIC COATINGS

Acrylabs, Inc. Roof Detail

Gutter Detail



730 Commercial Lane Honey Brook, PA 19344

Toll Free (866)-273-1355 Fax (610) 273-1357

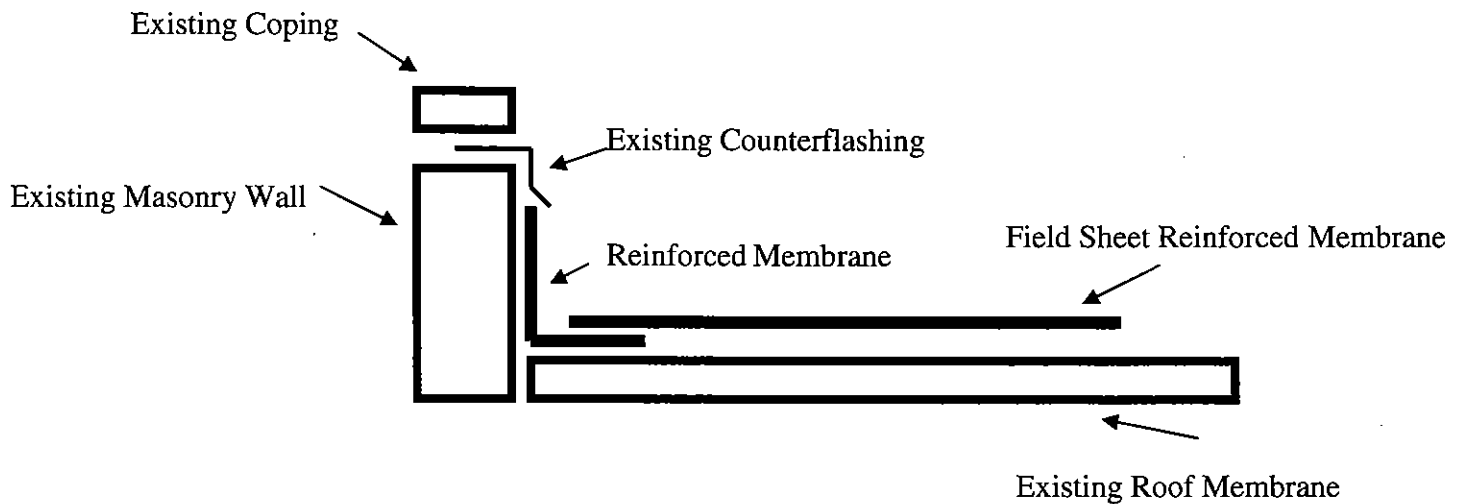
www.acrylabs.com



ACRYLIC COATINGS

Acrylabs, Inc. Roof Detail

Parapet Wall



*** Overlap for field sheet is a minimum of 3" inches**

*** Dress down existing counterflashing after reinforced coating application**

730 Commercial Lane Honey Brook, PA 19344

Toll Free (866)-273-1355 Fax (610) 273-1357

www.acrylabs.com

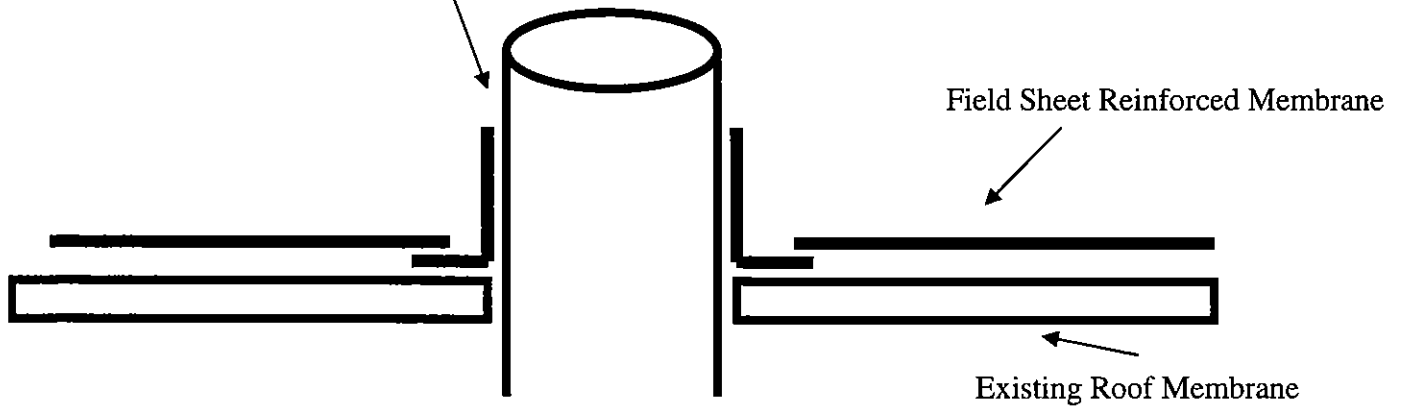


ACRYLIC COATINGS

Acrylabs, Inc. Roof Detail

Pipe Detail

Use appropriate width MESH 2000
Be sure to fabric is tight to pipe.
Remove all fishmouths.



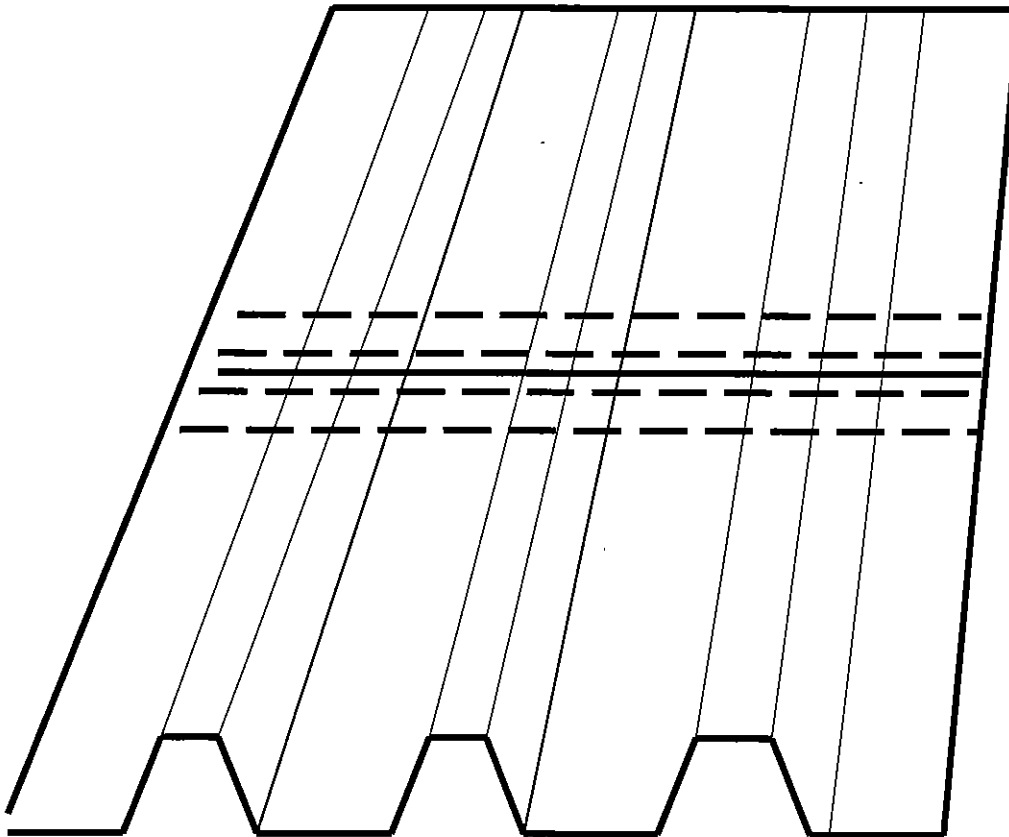
*** Overlap for field sheet is a minimum of 3" inches**



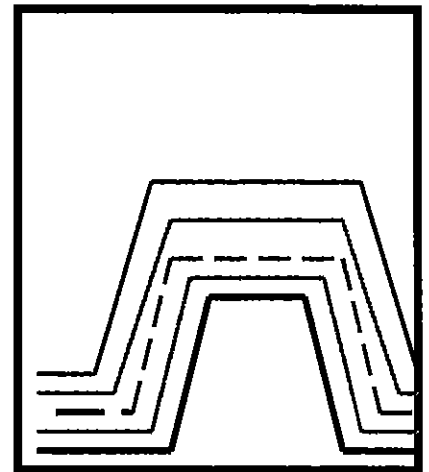
ACRYLIC COATINGS

Acrylabs, Inc. Roof Detail

Horizontal Seam Detail



Fabric is to be tight to the roof, remove all wrinkles and fishmouths.



**Install Reinforced Membrane over
Horizontal Seams using 12 " inch Mesh 2000**

730 Commercial Lane Honey Brook, PA 19344

Toll Free (866)-273-1355 Fax (610) 273-1357

www.acrylabs.com

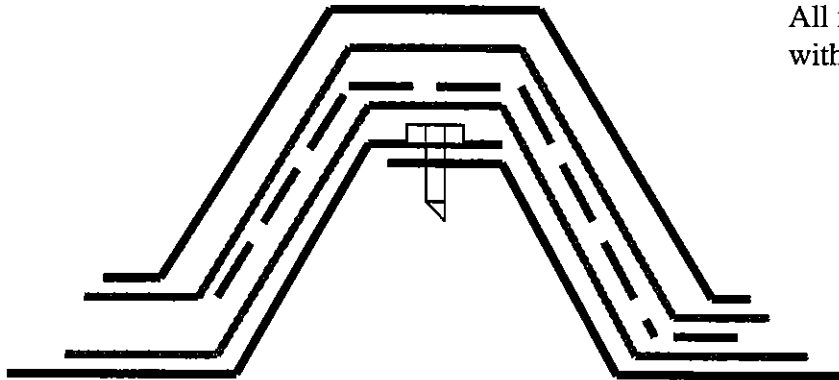


ACRYLIC COATINGS

Acrylabs, Inc. Roof Detail

Vertical Seam Detail

All fasteners should be tightened and
or replaced with oversized fastener.
All fasteners should be encapsulated
with 2400 Brush Grade Sealant



	Existing Deck		MESH 2000 6" Inch
	2100 Finish Coats		2100B Base Coats

730 Commercial Lane Honey Brook, PA 19344
Toll Free (866)-273-1355 Fax (610) 273-1357
www.acrylabs.com